

RJ45 04F SERIES

Low Profile, Mid-Plane Mounted RJ45,
Quad Port built-in with 1G/10G Transformer



KTH-04F SERIES



PRODUCT FEATURES:

- Low profile package for OCP NIC 3.0
- Compliant with IEEE 802.3 standard
- Qualified with top 1G/10G PHY manufacturers
- RoHS peak temperature per IPC/JEDEC J-STD-020C
- Fine tuned magnetics to specific PHY vendors

ELECTRICAL SPECIFICATIONS:

ELECTRICAL SPECIFICATIONS @ 25°±5°C --- OPERATING TEMPERATURE 0°C ~ +70°C

PART NUMBER	LED (L/R)	INSERTION LOSS	RETURN LOSS	CROSS TALK	CM TO CM MODE REJECTION	ESD
KTH-04F-V-MH1-A31-XXX (1G)	L: YE/GR R: GR	- 0.8dB MAX. (0.3 ~ 100MHz) - 1.2dB MAX. (100 ~ 125MHz)	- 20dB MIN. (1 ~ 30MHz) - 16dB MIN. (30 ~ 60MHz) - 12dB MIN. (60 ~ 100MHz)	- 40dB MIN. (1 ~ 10MHz) - 35dB MIN. (30 ~ 60MHz) - 30dB MIN. (60 ~ 100MHz)	- 30dB MIN.(300 ~ 100MHz)	CONTACT 6KV
KTH-04F-V-MS1-679-XXX (10G)	L: YE/GR R: GR	- 0.6dB MAX. (1 ~ 100MHz) - 1.0dB MAX. (100 ~ 200MHz) - 1.5dB MAX. (200 ~ 300MHz) - 2.0dB MAX. (300 ~ 400MHz)	- 20dB MIN. (1 ~ 100MHz) - 17dB MIN. (100 ~ 200MHz) - 14dB MIN. (200 ~ 300MHz) - 13dB MIN. (300 ~ 400MHz) - 12dB MIN. (400 ~ 500MHz)	- 25dB MIN. (1 ~ 500MHz)	- 22dB MIN.(1 ~ 100MHz) - 21dB MIN.(100 ~ 300MHz) - 20dB MIN.(300 ~ 800MHz)	CONTACT 6KV
KTH-04F-V-SHA-679-XXX (1G+10G)	L: YE/GR R: GR	For Port 1&2(1G) The Electrical specification, Please refer to KTH-04F-V-MH1-A31-XXX For Port 3&4(10G) The Electrical specification, Please refer to KTH-04F-V-MS1-679-XXX				

● LED: (LEFT/RIGHT) YE=YELLOW, GR=GREEN

DURABILITY TESTING RATING:

RJ45 DURABILITY TESTING RATING

PART NUMBER	MATING FORCE	UMMATING FORCE	DURABILITY	SUGGESTED PEAK WAVE
KTH-04F-V-MH1-A31-XXX (1G)	4 POUNDS MAX.	4 POUNDS MAX.	750 MATING CYCLED MIN.	SOLDERING CONDITION IS 260°C MAX. / 10 SECONDS MAX.
KTH-04F-V-MS1-679-XXX (10G)	4 POUNDS MAX.	4 POUNDS MAX.	750 MATING CYCLED MIN.	SOLDERING CONDITION IS 260°C MAX. / 10 SECONDS MAX.
KTH-04F-V-SHA-679-XXX (1G+10G)	4 POUNDS MAX.	4 POUNDS MAX.	750 MATING CYCLED MIN.	SOLDERING CONDITION IS 260°C MAX. / 10 SECONDS MAX.

MATERIAL SPECIFICATION:

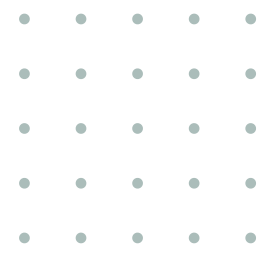
RJ45 MATERIAL SPECIFICATION

PART NUMBER	SHIELD		CONTACT		HOUSING	
	MATERIAL	FINISH	MATERIAL	PLATING	MATERIAL	SPECIFICATION
KTH-04F-V-MH1-A31-XXX (1G)	COPPER ALLOY	NICKEL PLATING	PHOS-BRONZE	50u" GOLD PLATING ON CONTACT AREANICKEL UNDERPLATING OVERALL	HIGH THERMOPLASTIC	UL 94V-0
KTH-04F-V-MS1-679-XXX (10G)	COPPER ALLOY	NICKEL PLATING	PHOS-BRONZE	50u" GOLD PLATING ON CONTACT AREANICKEL UNDERPLATING OVERALL	HIGH THERMOPLASTIC	UL 94V-0
KTH-04F-V-SHA-679-XXX (1G+10G)	COPPER ALLOY	NICKEL PLATING	PHOS-BRONZE	50u" GOLD PLATING ON CONTACT AREANICKEL UNDERPLATING OVERALL	HIGH THERMOPLASTIC	UL 94V-0



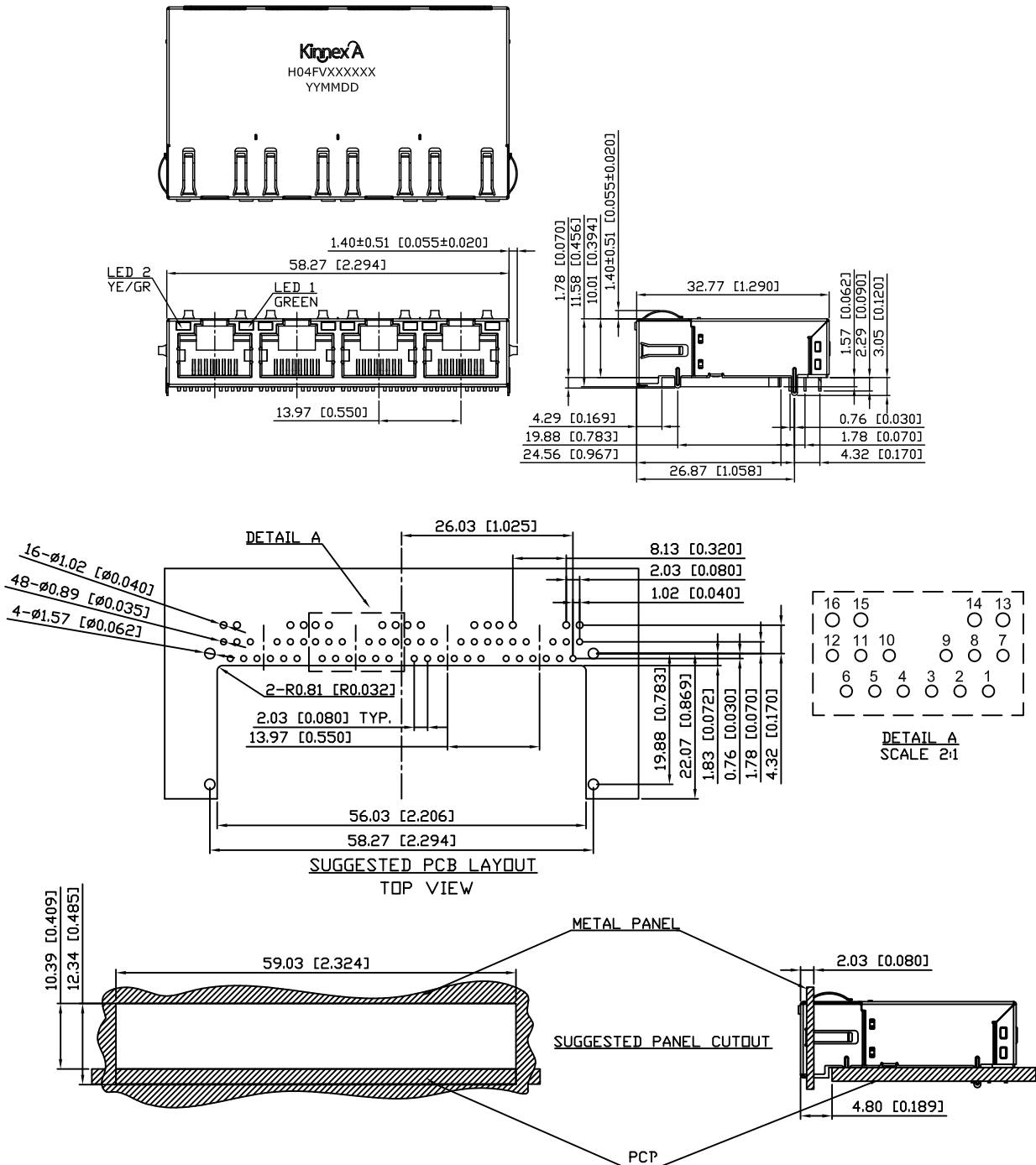
RJ45 04F SERIES

Low Profile, Mid-Plane Mounted RJ45,
Quad Port built-in with 1G/10G Transformer



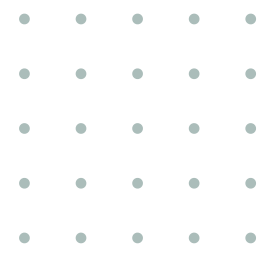
MECHANICAL

KTH-04F-V-MH1-A31-XXX / KTH-04F-V-MS1-679-XXX / KTH-04F-V-SHA-679-XXX



RJ45 04F SERIES

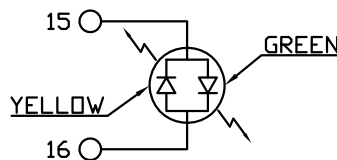
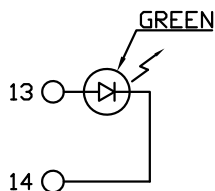
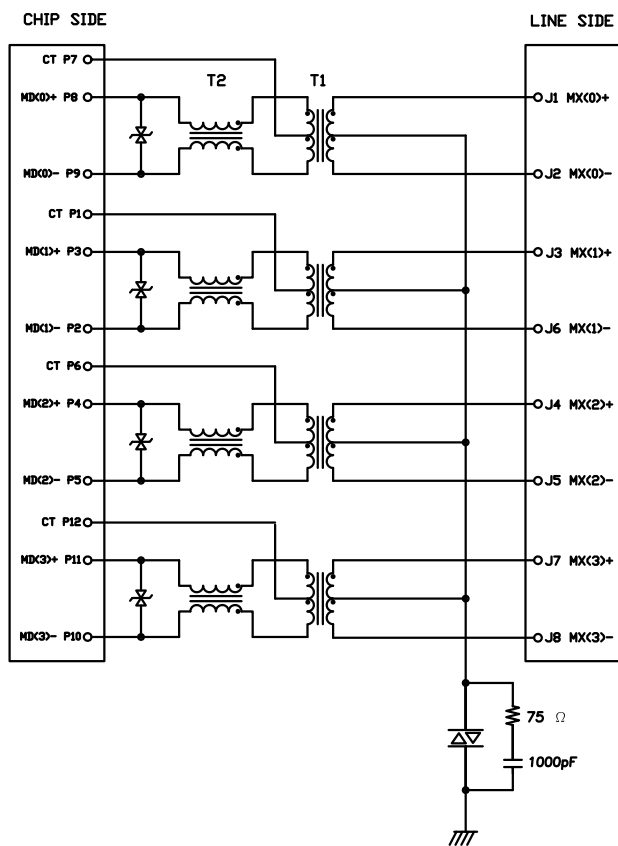
Low Profile, Mid-Plane Mounted RJ45,
Quad Port built-in with 1G/10G Transformer



SCHEMATICS

KTH-04F-V-MH1-A31-XXX / KTH-04F-V-MS1-679-XXX / KTH-04F-V-SHA-679-XXX

1G & 10G

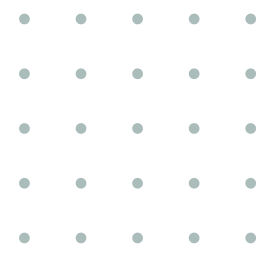


COLOR	VF(V) @20mA		IV(mcd) @20mA	IF(mA)	PEAK WAVE LENGTH λP(nm) @20mA
	TYP	MAX	TYP	TYP	TYP
GREEN	2.4	2.8	30	30	525
YELLOW	2.1	2.8	20	30	585
GREEN	2.4	2.8	30	30	525



RJ45 04F SERIES

Low Profile, Mid-Plane Mounted RJ45,
Quad Port built-in with 1G/10G Transformer



PACKING

KTH-04F-V-MH1-A31-XXX / KTH-04F-V-MS1-679-XXX / KTH-04F-V-SHA-679-XXX

