

KPW SERIES



FEATURES

- Quick and easy mounting procedures.
- Meet: IP67, UL94V-0, and RoHS Compliant.
- Operating temperature: -40°C~125 °C
- Dielectric Withstanding voltage: 1500V.
- Various termination options prevent reverse polarity.

APPLICATIONS

- Energy Storage/Building
- Battery Management System
- Electric Vehicle
- Heavy Duty Machine
- Medical Equipment

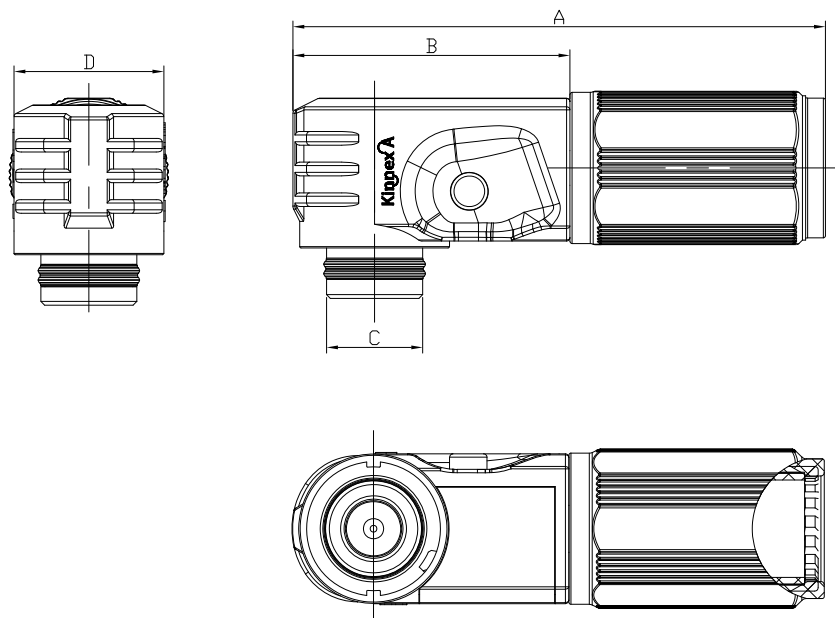
TECHNICAL INFORMATION

Description	200A	250A	300A	350A
Size	5.0mm	7.0mm	9.5mm	12.0mm
Rated Voltage/Current	200A/1500V	250A/1500V	300A/1500V	350A/1500V
Insulation Resistance	≥5000MΩ	≥5000MΩ	≥5000MΩ	≥5000MΩ
Operating Temperature	-40~+125°C	-40~+125°C	-40~+125°C	-40~+125°C
Levels of Protection	IP67(Mated)	IP67(Mated)	IP67(Mated)	IP67(Mated)
Terminal	Crimp	Crimp	Crimp	Crimp
Durability(Mating Cycles)	100	100	100	100
Cable/Wire OD(mm)	12.5~14.0	15.5~17.0	16.0~18.0	19.0~22.0
Cable/Wire Specifications	1/0 AWG or 50m ²	2/0 AWG or 70m ²	3/0 AWG or 95m ²	4/0 AWG or 120m ²
Suggested Striping Length	13~14	19~21	16~18	22~24
Flammability	UL 94 V-0	UL 94 V-0	UL 94 V-0	UL 94 V-0
Conform to RoHS	Yes	Yes	Yes	Yes





1500V DC PRODUCT DIMENSIONS - RIGHT ANGLE PLUG

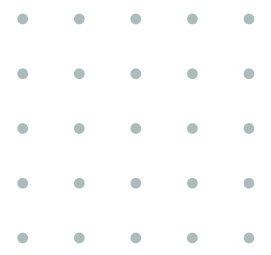


SIZE	A	B	C	D
5.0mm	78.2mm	40.7mm	Ø14.1mm	22.0mm
7.0mm	87.0mm	38.7mm	Ø16.7mm	23.5mm
9.5mm	100.0mm	43.0mm	Ø18.5mm	29.0mm
12.0mm	106.4mm	48.0mm	Ø21.6mm	33.0mm

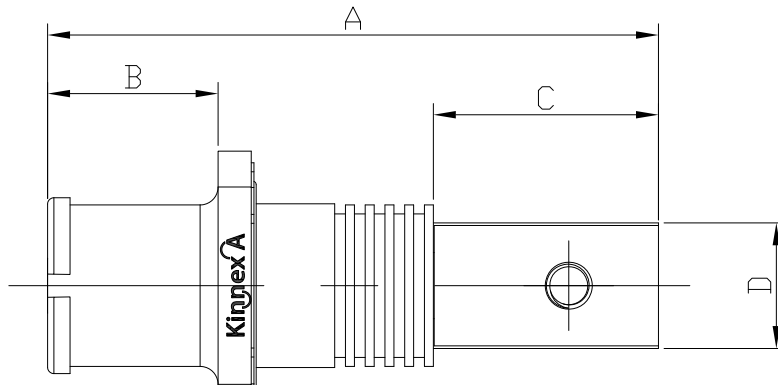
ORDERING INFORMATION

SIZE	CABLE SIZE(mm)	P/N	TERMINAL STYLE	COLOR
5.0mm(200A)	Ø12.5~14.0	KPW-H050C5MR1BD1	CRIMP	BLACK
		KPW-H050C5MR1GD1		ORANGE
7.0mm(250A)	Ø15.5~17.0	KPW-H070C7MR1BD1	CRIMP	BLACK
		KPW-H070C7MR1GD1		ORANGE
9.5mm(300A)	Ø16.0~18.0	KPW-H095C3MR1BD1	CRIMP	BLACK
		KPW-H095C3MR1GD1		ORANGE
12.0mm(350A)	Ø19.0~22.0	KPW-H120C6MR1BD1	CRIMP	BLACK
		KPW-H120C6MR1GD1		ORANGE





1500V DC PRODUCT DIMENSIONS - SOCKET

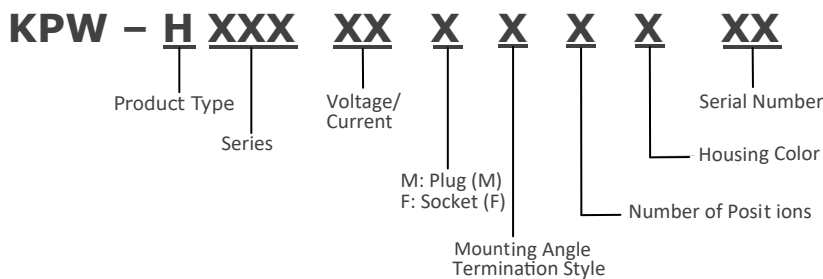


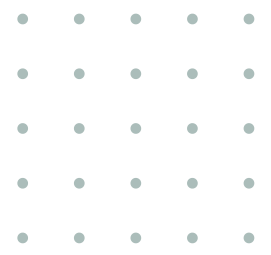
SIZE	A	B	C	D
5.0mm	68.1mm	19.0mm	25.1mm	14.0mm
7.0mm	68.4mm	20.8mm	23.5mm	16.0mm
9.5mm	72.9mm	26.4mm	23.0mm	16.0mm
12.0mm	73.9mm	26.3mm	47.6mm	21.0mm

ORDERING INFORMATION

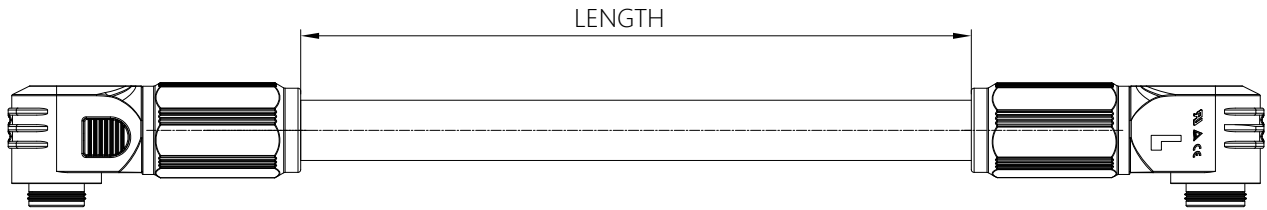
SIZE	TERMINATION STYLE	P/N	COLOR
5.0mm(200A)	BUSBAR	KPW-H050C5R61BD1	BLACK
		KPW-H050C5R61GD1	ORANGE
7.0mm(250A)	BUSBAR	KPW-H070C7R51BD1	BLACK
		KPW-H070C7R51GD1	ORANGE
9.5mm(300A)	BUSBAR	KPW-H095C3R51BD1	BLACK
		KPW-H095C3R51GD1	ORANGE
12.0mm(350A)	BUSBAR	KPW-H120C6R51BD1	BLACK
		KPW-H120C6R51GD1	ORANGE

DEFINITION OF PART NUMBERS





ENERGY STORAGE CABLE



ORDERING INFORMATION

P/N	CABLE OD(mm)	CONDUCTOR OD(mm)	WIRE SPECIFICATIONS	LENGTH(mm)	CONNECTOR P/N	COLOR
KPW-KE4150GCBCGA1	Ø21.5	Ø16.5	4/0 AWG or 120m2	150	KPW-H120C6MR1BD1	ORANGE
					KPW-H120C6MR1GD1	
KPW-KE4180GC CGA1	Ø21.5	Ø16.5	4/0 AWG or 120m2	180	KPW-H120C6MR1GD1	ORANGE
					KPW-H120C6MR1GD1	
KPW-KE42M0BCBCBA1	Ø21.5	Ø16.5	4/0 AWG or 120m2	2000	KPW-H120C6MR1BD1	BLACK
					KPW-H120C6MR1BD1	

